

RICOH

MP 6002
MP 7502
MP 9002

Digital B/W Multi Function Printer

✓ Copier ✓ Printer ✓ Facsimile ✓ Scanner



Enhanced high-end productivity

Information volumes are exploding; you need a solution that can simplify every kind of document processing. Gestetner's ultra-fast MP 6002/MP 7502/MP 9002 make high volume copying, printing, scanning, faxing and finishing easy. Now you can automate document heavy tasks and ensure outstanding security for your expanding workflow.

- Exceptional ease of use
- High-level productivity at 60, 75, 90 ppm
- Eco-friendly features
- Energy and paper saving
- High document security



Gestetner in functions to optimise user productivity



Improve productivity

Accelerate your workflow: get first copies in 3.9 seconds or less; scan single-pass colour at 178 images per minute (ipm) in duplex and 90 ipm in simplex at high quality 200 dpi. Handle more types of paper in-house using the Bypass Tray.



Maximise ease-of-use

The user-friendly operation panel lets you customise your own home screen. After embedding your preferences, you can access your personal screen by pressing the home button. It's also easy for casual users to print from SD/USB drives simply by inserting them into the slot on the panel.



Manage valuable resources

Efficiently manage resources and encourage sustainable printing. The enhanced controller's pop-up Information Screen displays important environmental and administrator messages. Its Eco-Friendly Indicator shows users their print output and settings histories. You can also use the MP 6002/MP 7502/MP 9002's Quota Settings per user/group to control operational costs.



Achieve sustainable benefits

High-level productivity goes hand-in-hand with some surprising green benefits with the MP 6002 and MP 7502. Their environmentally friendly features such as the quick response 'sleep' mode, are specifically designed to create a greener workflow.

Optimise performance



Accelerate input, throughput, output

For ultra-reliable, document heavy processing the MP 6002/MP 7502/MP 9002 have it all. They enable high volumes of diverse document types to be quickly scanned, assembled, copied, distributed and printed – day in, day out. And with sophisticated finishing options, every in-house job can have a professional-looking result.

Cut turnaround times

The MP 6002/MP 7502/MP 9002 offer a rapid warm-up and high-speed output at 60, 75 or 90 ppm respectively. So even large print jobs are processed in no time. High volume? No problem. Avoid printing interruptions with high capacity paper trays that can hold up to 8,300 sheets.



Reduce costs

Reduce high-end processing costs. Quickly see the financial benefits of a low Typical Energy Consumption (TEC) value, easy quota setting, standard duplex and paperless faxing. Save capital expenditure and running costs by sharing the fax option of another MFP on your network, using the Remote Fax function.

Boost efficiency



Streamline your workflow

Make high-volume document capture and management easy. Benefit from fast single and double-sided scanning. Enjoy the convenience of features like scan to email, scan to folder, and scan to FTP/URL. Accelerate document distribution with GlobalScan NX's intelligent scanning. Enhance your workflow with Streamline NX®'s integrated management applications.

Extend functionality

Browse certain websites and print compatible web pages, and other online materials with the help of the optional browser unit. Save time with Bates Numbering, another powerful feature that automates the numbering process. Ideal for companies like law firms that rely on accurate sequence numbering.



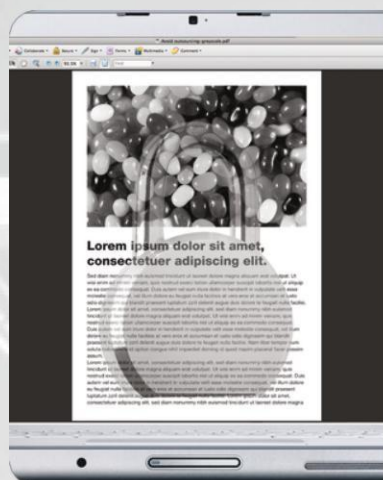
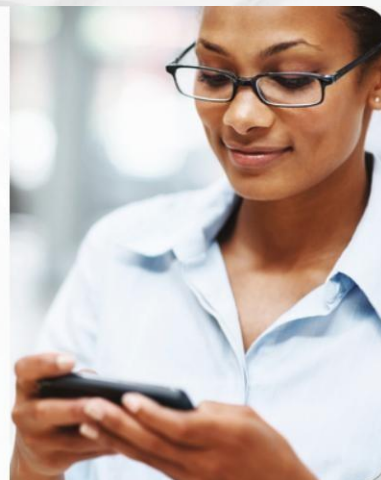
Simplify administration

The MP 6002/MP 7502/MP 9002 offer advanced management tools: a Power Consumption Measurement facility helps reduce energy use and costs; @Remote saves you time by managing devices remotely; Web Image monitor checks your MFP status online, and Equitrac Office helps you allocate costs to specific users.

Secure, all-Inclusive thinking

Strengthen security

Take control. Make unauthorised copies illegible with the Unauthorized Copy Control function. Upgrade your data protection to Enhanced Encryption Level AES256bit and SHA2 encryption. Safeguard your address books, authentication and temporary data with Automatic Data Overwrite. Prevent data leakage from the hard drive with HDD overwrite/encryption.



Ensure ongoing compliance

These advanced MFP's support PDF/A standards to facilitate long-term document storage. Digital signatures can also be added to PDFs to enable accurate validation. Powerful security features are present to prevent unauthorised access to your documents and incoming faxes. And access to email and fax directories can be controlled via user authentication.

Include professional finishing

You want high volume productivity – so why not include the all-important finishing? Our unique multi-fold option means you can include, for example, A3 charts and tables in A4 documents. You can also achieve professional-looking results with in-line stapling, cover insertion and booklet making. Eliminate outsourcing – let your MFP take care of everything.



Critical capabilities for business communications



- 1** Easy access via intuitive colour control panel with customisable home screen, home button and SD/USB slot
- 2** Standard 4,200 sheet paper trays to omit frequent refills and stay productive at all times
- 3** 2,000 sheet booklet maker with 50-page stapler produces accurate, professionally folded sets
- 4** Standard 100-sheet bypass tray to take advantage of thicker paper types up to 216 gsm
- 5** Multi-folding Unit option supports 6 folding patterns enabling creative printing solutions: 2-folding, Z-folding, 3-folding (in and out) and 4-folding (gate and double parallel)
- 6** Cover Interposer Tray option: add value to your documents by inserting pre-printed colour sheets/covers
- 7** External USB keyboard support saves time when using the MFPs to scan and index documents for electronic document management (EDM) or archiving
- 8** 4,000-sheet A4 Large Capacity Tray option to increase your high-volume productivity

MP 6002/MP 7502/MP 9002

MAIN SPECIFICATIONS

GENERAL

| | |
|--------------------------|-----------------------------------|
| Warm-up time: | 30/30/300 seconds |
| First output speed: | 3.9/3.2/2.9 seconds |
| Continuous output speed: | 60/75/90 pages per minute |
| Memory: | Standard: 1 GB Maximum: 1.5 GB |
| HDD: | 250 GB |
| Dimensions (W x D x H): | 690 x 799 x 1,171 mm |
| Weight: | 214 kg |
| Power source: | 220 - 240 V, 50/60 Hz |

COPIER

| | |
|-------------------|---|
| Copying process: | Four laser beams scanning and electro-photographic printing |
| Multiple copying: | Up to 999 copies |
| Resolution: | 600 dpi |
| Zoom: | From 25% to 400% in 1% steps |

PRINTER

| | |
|-------------------------------|--|
| Printer language: | Standard: PCL5e, PCL6, PDF Option: XPS, Adobe® PostScript® 3, IPDS |
| Print resolution: | 300 x 300 dpi, 600 x 600 dpi, 1,200 x 1,200 dpi |
| Interface: | Standard: USB 2.0, SD slot, Ethernet 10 base-T/100 base-TX Option: Bi-directional IEEE 1284, Wireless LAN (IEEE 802.11a/b/g), Bluetooth, Gigabit Ethernet |
| Network protocol: | TCP/IP (IP v4, IP v6), IPX/SPX (Option) |
| Windows® environments: | Windows® XP, Windows® Vista, Windows® 7, Windows® Server 2003, Windows® Server 2008, Windows® Server 2008R2 |
| Mac OS environments: | Macintosh OS X Native v10.2 or later |
| UNIX environments: | UNIX Sun® Solaris: 2.6, 2.7, 2.8, 2.9, 2.10 HP-UX: 10.x, 11.x, 11i v2, 11i v3 SCO OpenServer: 5.0.6, 5.0.7, 6.0 Red Hat® Linux Enterprise: 4, 5, 6 IBM® AIX: 5L V5.3, V6.1, V7.1 |
| Nova-® Netware® environments: | v6.5 |
| SAP® R/3® environments: | SAP® R/3® |

SCANNER

| | |
|------------------|--|
| Scanning speed: | Full colour: Maximum 90 originals per minute B/W: Maximum 90 originals per minute |
| Resolution: | Maximum: 600 dpi |
| Original size: | A3, A4, A5, B4, B5 |
| Bundled drivers: | Network TWAIN |
| Scan to: | E-mail, Folder, USB, SD card |

FAX

| | |
|---------------------|---|
| Circuit: | PSTN, PBX |
| Compatibility: | ITU-T (CCITT) G3 |
| Resolution: | 8 x 3.85 line/mm, 200 x 100 dpi 8 x 7.7 line/mm, 200 x 200 dpi |
| Transmission speed: | G3: 3 second(s) (200 x 100 dpi) 2 second(s) (200 x 100 dpi, JBIG) |
| Modem speed: | Maximum: 33.6 Kbps |
| Scanning speed: | 0.7 second(s) |
| Memory capacity: | Standard: 4 MB Maximum: 28 MB |

PAPER HANDLING

| | |
|-------------------------|---|
| Recommended paper size: | Standard paper tray(s): A3, A4, A5, B4, B5 Bypass tray: A3, A4, A5, A6, B4, B5, B6 |
| Paper input capacity: | Maximum: 8,300 sheets |
| Paper output capacity: | Maximum: 3,500 sheets |
| Paper weight: | Standard paper trays: 52 - 216 g/m² Bypass tray: 52 - 216 g/m² |

ECOLOGY

| | |
|--------------------|---|
| Power consumption: | Maximum: 1,710/1,760/1,840 W Ready mode: 299/315/306 W Low power mode: 191/191/206 W Sleep mode: 7.2/7.2/7.3 W TEC (Typical Electricity Consumption): 7.06/8.08/15.97 kWh |
|--------------------|---|

SOFTWARE

| | |
|-----------|---|
| Standard: | SmartDeviceMonitor, Web SmartDeviceMonitor®, Web Image Monitor |
| Optional: | GlobalScan NX, Card Authentication Package, @Remote, SAP R/3 Custom Device Type |

OPTIONS

ADF handle, 4,000-sheet large capacity tray, 2,000-sheet finisher, 3,000-sheet finisher, 2,000-sheet booklet finisher, Punch kits, 9-bin mailbox, Cover Interposer, Tab sheet unit, Copy tray, Jogger unit, Copy Connect Kit, Plockmatic Booklet maker, GBC StreamPunch III, Bi-directional IEEE 1284, Wireless LAN (IEEE 802.11a/b/g), Bluetooth, Gigabit Ethernet, VM Card (basic model only), Netware, Browser unit, Counter interface, File format converter, Key counter bracket, Data Overwrite Security Unit (Certified version), Copy Data Security Unit, Fax Connection Unit, Fax option, Multi folding unit, IPDS unit, Unicode Font Package for SAP

CONSUMABLES

| | |
|-----------------|----------------------|
| Toner capacity: | Black: 43,000 prints |
|-----------------|----------------------|

Power Consumption values apply to the SP models.

For availability of models, options and software, please consult your local Gestetner supplier.



ISO9001 certified, ISO14001 certified, ISO27001 certified

All brand and/or product names are trademarks of their respective owners.

Specifications and external appearance are subject to change without notice. The colour of the actual product may vary from the colour shown in the brochure. The images in this brochure are not real photographs and slight differences in detail might appear.

Copyright © 2012 Gestetner Europe PLC. All rights reserved. This brochure, its contents and/or layout may not be modified and/or adapted, copied in part or in whole and/or incorporated into other works without the prior written permission of Gestetner Europe PLC.

www.gestetner-europe.com

RICOH

For more information,
please contact